

Essential Lighting Solutions | Hot Sheet Stock Report | Updated 04-16-2026

Exterior Lighting Solutions

Dorado XLR Area/Site



Catalog Number	Description	Quantity Available
QDXLR-120-50-UNVL-1-5-N-Z5	Dorado XLR Area Light 15,000 L 125W 120-277V 5000K 5M Lens L70 > 125,000 Hrs Bronze Fixture Color No Mount Included 5-Year Warranty	3111

Dorado XLP Area/Site



Catalog Number	Description	Quantity Available
QDXLP1-24-50-UNVL-1-3-N-Z1	Dorado XLP Area Light 33,000lm 222W 120-277VAC 5000K 3M Lens Bronze No Sensor Slip fitter Mount for 2 3/8" Round Tenon 10-Year Warranty	10
QDXLP1-32-40-UNVL-1-5-N-Z3	Dorado XLP Area Light 44,300lm 307W 120-277VAC 4000K 5M Lens Bronze No Sensor Pole Mount for Square Pole 10-Year Warranty	50
QDXLP1-32-50-UNVL-2-5-N-Z3	Dorado XLP Area Light 45,400lm 307W 120-277VAC 5000K 5M Lens White Pole Mount for Square Pole 10-Year Warranty	6
QDXLP1-50-30-UNVL-1-5-N-Z3	Dorado XLP Area Light 68,100lm 458W 120-277VAC 3000K 5M Lens Bronze No Sensor Pole Mount for Square Pole 10-Year Warranty	33
QDXLP1-50-50-UNVL-1-5-N-Z1	Dorado XLP Area Light 68,100lm 458W 120-277VAC 5000K 5M Lens Bronze No Sensor Slip-fitter Mount for 2-3/8" Round Tenon 10-Year Warranty	12
QDXLP1-50-50-UNVL-2-5-N-Z3	Dorado XLP Area Light 68,100lm 458W 120-277VAC 5000K 5M Lens White No Sensor Pole Mount for Square Pole 10-Year Warranty	10

QubeFlood Area/Site



Catalog Number	Description	Quantity Available
QF4-1-UNVL-5-50-100	QubeFlood4 Luminaire: 11,650 Lumen 5000K 93W 120/277V 5M Lens 1000mA Bronze	10
QF3-1-UNVH-2S-50-1050	QubeFlood3 10,000L 102W 347 - 480 V 2S Lens Bronze	8
QF3-1-UNVL-2S-50-1050	QubeFlood3 10,000L 100W 120 - 277 Type 2S Bronze	98
QF3-1-UNVL-5S-50-1050	QubeFlood3 Bronze Low Voltage 5S Lens	6
QF3-2-UNVH-5S-50-1050	QubeFlood3 10,000L 102W 347 - 480V Type 5S White	40
QF3-3-UNVL-5S-50-1050	QubeFlood3 Black Low Voltage 5S Lens	2

Essential Lighting Solutions | Hot Sheet Stock Report | Updated 04-16-2026

QubeLot Area/Site



Catalog Number	Description	Quantity Available
QL3-BZ-UNVL-3-5-50-11-100	QubeLot3 12,770 Lumens 5000K 102W 120/277V Bronze 1000mA 3 Qube	2
QL3-BZ-UNVL-3-5-50-15-100	QubeLot3 17,410 Lumens 5000K 138W 120/277V Bronze 1000mA 3 Qube	10
QL3-GN-UNVH-4-5-40-15-115	QubeLot3 25,000 Lumens 4000K 220W 347/480V Green RAL 6029 1150mA 4 Qube	20

QubePAK Regal3



Catalog Number	Description	Quantity Available
WPR3-UNVL-100-2-40-BZ	QubePAK Regal 3 Wall Mount 13,000lm 100W 120-277VAC 4000K Type 2 Lens Dimmable Bronze L70 100,000 hrs Calculated DLC Premium 10-Year Warranty	9
WPR3-UNVL-100-2-50-BZ	QubePAK Regal 3 Wall Mount 13,000lm 100W 120-277VAC 5000K Type 2 Lens Dimmable Bronze L70 100,000 hrs Calculated DLC Premium 10-Year Warranty	47
WPR3-UNVL-100-4-30-BZ	QubePAK Regal 3 Wall Mount 13,000lm 100W 120-277VAC 3000K Type 4 Lens Dimmable Bronze L70 100,000 hrs Calculated DLC Premium 10-Year Warranty	4
WPR3-UNVL-37-2-30-BZ	QubePAK Regal 3 Wall Mount 4701lm 37W 120-277VAC 3000K Type 2 Lens Non-Dimmable Bronze L70 100,000 hrs Calculated Not DLC Approved 10-Year W	70
WPR3-UNVL-58-2-40-BZ	QubePAK Regal 3 Wall Mount 7695lm 58W 120-277VAC 4000K Type 2 Lens Dimmable Bronze L70 100,000 hrs Calculated DLC Premium 10-Year Warranty	3
WPR3-UNVL-58-4-40-BZ	QubePAK Regal 3 Wall Mount 7695lm 58W 120-277VAC 4000K Type 4 Lens Dimmable Bronze L70 100,000 hrs Calculated DLC Premium 10-Year Warranty	50

Decorative WallPack



Catalog Number	Description	Quantity Available
3-4046D-05-50	Wall Mount Up/Down Outdoor Cylinder LED Fixture 1330 Lumen 16W 120-277V 5000K Black Fixture Color	144
3-5046D-05-3000K	Wall Mount Up/Down Outdoor Cylinder LED Fixture 3200 Lumen 34W 120-277V Black Fixture Color	12

QubePark Garage/Canopy



Catalog Number	Description	Quantity Available
QG2-1-UNVL-2-5M-52-0	QubePark - Parking Garage Fixture - Low Voltage	49

Canopy Star XL



Catalog Number	Description	Quantity Available
GCL1-07-UNVL-50-F-WH	Canopy Star XL LED Gas Canopy Light 11,314lm 73W 120-277VAC 5000K Frosted Lens Dimmable White DLC Premium 10-Year Warranty	78
GCL1-15-UNVL-50-F-WH	Canopy Star XL LED Gas Canopy Light 22,831lm 152W 120-277VAC 5000K Frosted Lens Dimmable White DLC Premium 10-Year Warranty	36

Essential Lighting Solutions | Hot Sheet Stock Report | Updated 04-16-2026

Interior Lighting Solutions

LSF1 Wrap Fixture



Catalog Number	Description	Quantity Available
LSF1-1-4-UNVL-25-2-40	LSF1 4' LED Wrap Around Fixture Surface and Suspended 3350lm 25W 120-277VAC 4000K L70 161,000 hrs Calculated DLC Premium 10-Year Warranty	320
LSF1-1-4-UNVL-29-3-T	LSF1 4' LED Wrap Around Fixture Surface and Suspended 3900lm 29W 120-277VAC 2700-6500K Smart Blu L70 161,000 hrs Calculated DLC Premium 10-Year Warranty	26
LSF1-1-4-UNVL-30-2-40	LSF1 4' LED Wrap Around Fixture Surface and Suspended 3980lm 28.8W 120-277VAC 4000K L70 161,000 hrs Calculated DLC Premium 10-Year Warranty	194
LSF1-1-8-UNVL-50-2-40	LSF1 8' LED Wrap Around Fixture Surface and Suspended 6700lm 51.1W 120-277VAC 4000K L70 161,000 hrs Calculated DLC Premium 10-Year Warranty	2
LSF1-1-8-UNVL-50-3-T	8' LED Wrap Around Fixture 50W 6500 Lumens 2700-6500K 120-277V Blu-Drive	13
LSF1-2-4-UNVL-25-2-40	LSF1 4' LED Wrap Around Fixture Surface and Suspended 14" Wide 3350lm 25W 120-277VAC 4000K L70 161,000 hrs Calculated DLC Premium 10-Year Warranty	163

EcoStar3 Cabinet & Display & EcoStar4 Refrigeration Lighting



Catalog Number	Description	Quantity Available
ESRP-4EH-1-10-24-6-40-D10-C	EcoStar 4EH Refrigeration Display Luminaire 6-Foot Length 1,524 L 11W 24V 4000K 10" Lense Center Unit Dimmable 97,000 Hrs DLC Listed 10-Year Warranty	16
ESRP-4EH-1-4-24-5-50-D10-C	EcoStar 4EH Refrigeration Display Luminaire 5-Foot Length 1,200 L 9W 24V 5000K 4" Lense Center Unit Dimmable 97,000 Hrs DLC Listed 10-Year Warranty	10

Bayline High Bay



Catalog Number	Description	Quantity Available
BLN1-1-UNVL-50-70-B-90-S1	BayLine High Bay 15,000 L 100 W 120-277 V 5000 K 90-Degree Lens Dimmable Integrated Motion/Photocell Sensor 10-Year Warranty	3
BLN1-1-UNVL-50-70-M-120-S1	BayLine High Bay 31,000 L 205 W 120-277 V 5000 K 120-Degree Lens Dimmable Integrated Motion/Photocell Sensor 10-Year Warranty	18

Exsabay XLE High Bay



Catalog Number	Description	Quantity Available
EBXLE1-1-UNVL-110-40-E-Y-N	ExsaBay XLE High Bay Luminaire 24150L 120 - 277V 161W 4000K 110 - Degree Motion Sensor 10' Black Power Cord	3
EBXLE1-1-UNVL-90-50-C-N-N	ExsaBay XLE High Bay Luminaire 15150L 120 - 277V 101W 5000K 90 - Degree 10' Black Power Cord	5
EBXLE1-1-UNVL-90-50-C-N-N A004	ExsaBay XLE High Bay Luminaire 8000L 120 - 277V 53W 5000K 90 - Degree 10' Black Power Cord	7
EBXLE1-1-UNVL-90-50-C-Y-N	ExsaBay XLE High Bay Luminaire 15150L 120 - 277V 101W 5000K 90 - Degree Motion Sensor 10' Black Power Cord	16
EBXLE1-1-UNVL-90-50-E-N-N	ExsaBay XLE High Bay Luminaire 24150L 120 - 277V 161W 5000K 90 - Degree 10' Black Power Cord	10
EBXLE1-1-UNVL-90-50-F-N-Y	ExsaBay XLE High Bay Luminaire 30150L 120 - 277V 201W 5000K 90 - Degree BBU 10' Black Power Cord	12
EBXLE1-1-UNVL-90-50-J-N-N	ExsaBay XLE High Bay Luminaire 58550L 120 - 277V 401W 5000K 90 - Degree 10' Black Power Cord	2
EBXLE1-1-UNVL-90-50-K-N-N	ExsaBay XLE High Bay Luminaire 72150L 120 - 277V 481W 5000K 90 - Degree 10' Black Power Cord	5
EBXLE1-TL	ExsaBay XLE1 Twist Lock	180
EBXLE1-WG-1	ExsaBay XLE Wire Guard For 15150L Fixture 101W	20
EBXLE1-WG-2	ExsaBay XLE Wire Guard For 24150 and 30150L Fixture 201 and 161W	60



Essential Lighting Solutions | Hot Sheet Stock Report | Updated 04-16-2026

LED Tubes



Catalog Number	Description	Quantity Available
ST1-1-UNV-4-H-40-TWS1	Kitted: (1) TwinStar Part# TWS1 TwinStar Strip 48" (2) LED Tubes Part# ST1-1-UNV-4-H-40 T8 Type B LED Tube Single-End 4' 4070L 100-277V 32W 4000K	29
ST1-1-UNV-4-S-35	LED Tube 21W 2,200 Lumen 3500K 100-277V	149
ST1-2-UNV-2-9A-50	LED Tube 2' Single-Ended Type B Tube 1,100 L 9W 120-277V 5000K	22
ST1-2-UNV-3-9A-50	LED Tube 3' Single-Ended Type B Tube 1,390 L 10W 120-277V 5000K	157
ST1-2-UNV-4-12A-35	4' LED Tube 12.1W 1,800 Lumen 3500K 100-277V Includes Wire	6508
ST1-4-UNV-4-12A-35	4' LED Tube 12.9W 1,820 Lumen 3500K 100-277V	140
ST1-4-UNV-4-17B-40	T10 Type B LED Tube Single Ended 4' 2720L 120 - 277V 17W 4000K	526
ST1-7-UNV-4-10A-35-GL	T8 Type B LED Tube Single Ended 4' 1800L 120 - 277V 10W 3500K Glass	1034
ST1-7-UNV-4-10A-40-GL	T8 Type B LED Tube Single Ended 4' 1800L 120 - 277V 10W 4000K Glass	35275
ST1-7-UNV-4-11A-35-GL	T8 Type B LED Tube Single Ended 4' 1750L 120 - 277V 11W 3500K Glass	31838
ST1-7-UNV-4-12A-35	T8 Type B LED Tube Single Ended 4' 1750L 120 - 277V 12W 3500K	1766
ST1-7-UNV-4-13A-50	T8 Type B LED Tube Single Ended 4' 1750L 120 - 277V 14W 5000K	308
ST3-1-4-11A-50-P-DE-T5	T5 Type A/B LED Tube Double Ended 4' 1800L 120 - 277V 11W 5000K	5271
ROS1804T832WALUS-5PK	*5pk* 1x8 four light recessed retail F32 offset Ballast cover retrofit kit includes: -(1) offset bracket set -(4) 1/4 turns -(10) Tek screws -(8) un-shunted sockets. -(2) End cover pl	240
LS-WG-48	T8 Linear Wire Guard For Lone Star - TXS132X1FF Fixture	533
ROS-18-04-US	Recessed Retrofit Kit 2 lamps to 4 lamps w/ unshunted tombstones (Case Qty 5)	108
KT-LED12T5HE-36GC-850-DX2	12W T5 LED 1600lm 12W 120-277V 5000K Single- or Double-Ended Wiring	13
L16-T5-SE-3-40CG	16W, LED Linear T5 tube Single-Ended Power 3FT 4000K, Coated Glass	237
L16T5SE335-CG	16W LED Linear T5 tube Single-Ended Power 3FT 3500K Coated Glass	5
L16T5SE350-CG	16W, LED Linear T5 tube Single-Ended Power 3FT 5000K Coated Glass	50
LED11T5HEL36FG850BF	T5HE Double Ended Lamp 1500lm 11W 120-277V 5000K 3ft	22
L24T8/835/9G-ID DE	T8 tube 24" 9w internal driver double end input 120-277V 3500K 1100 Lms	51
97894	T8 3500K 3 Foot Medium Bi-Pin G13	3
L48T8/835/15G-XT	T8 tube 48" 15w 3500K 1800 Lms	348
10924	LED T8 Dual Mode U-Bend Replacement Lamp 1" U-Bend 4000K 2000 Lumens 13W 120-277V	80

Essential Lighting Solutions | Hot Sheet Stock Report | Updated 04-16-2026

LED Bulbs



Catalog Number	Description	Quantity Available
A15FR5/830/OMNI2/LED 80197	LED A15 5.5W 3000K DIMMABLE E26 ProLED	8
S9031	LED Frosted A15 E26 450 Lumen 5.5 Watt 120V 3000K Damp Rating 5 Year Limited - 10 hr per day 25000 Hours Rated Type A	694
57856	A19 E26 Bulb 8.5W 120V 800 Lumen 2700K Dimmable	103
79702	Sylvania 79702 - LED8.5A19F83510YVRP A19 A Line Pear LED Light Bulb	16
8.5A19DIM/830	8.5W A19 3000K Dimmable 60W Equivalent	36
40773	Type: BR30 E26 Base 8W 120V Color: 4000 K Dimmable	123
LED9BR30D50K	Dimmable 9W Smooth BR30 - 5000K	91
S8021	LED Filament Bulb 100 Lumen 1 Watt 120V 2700K Suitable for Outdoor Use 3 Year Warranty	73
6.5MRGD930NF/JA8/G2	MR16 GU10 LED Bulb 500 Lumen 6.5W 120V 3000K 90CRI 25 Degree Beam Angle	11
98089	98088 [37HID LED E26 Base 37w 120-277v 5000K 5200 Lmns Non-Dimmable	136
70046-900-000	70046 Medium Base One-Piece Keyless HID Glazed Porcelain Lampholder Incandescent Single Circuit Side Wired 4KV-Pulse Rated - White	547
LH0291	E26/E27 medium base lampholder extender, extends lamp approx. 1 1/4"	2473
LH0682-E39	medium base to E39 mogul base lamp holder/socket reducer	220
HM00910	Adapter Converter Socket 4-Pin G24q/GX24q to Medium Screw (E26)	192
LED-7319	LED-7319 socket extender	49
7.5MR16DIM/940FL35/R	MR16 7.5W 4000K 550 Lmns Base GU5.3 12V Dimmable	7
11PAR30DIM/930NF25	E26 Base 75W 11W 3000K 900L 120V Suitable to replace 50W, 75W, 120W halogen lamps	36
11PAR30DIM/940FL40	11W PAR30 4000K 40 Degree Flood 1030 Lumens 120V Dimmable 75W Equivalent	12
12.5PAR30G4DIM/930NF25/B	12.5W PAR30 3000K 25 Degree Spot Dimmable 75W Equivalent Black	5
12PAR30L/AMB/F40/840/DIM ULW	4000K Lamp 12W E26 Base Beam angle 40°	8
74603	Par 30 11 watt 5000K 850 Lumens	23
97902	Power: 13 W Warm White 3000K CRI 90 65/90 Lumens 1050 LPW 81 Beam Angle FL 40 Degrees CBCP 2300 **BLACK LAMP**	6
AKTGP30BL	Par30 Short, Gimbal Ring - Prescolite - Black	48
PAR30FL11L/930/BH/LED	PAR30 Long Neck Medium Base PAR30FL11L/930/BH/LED Black Housing Dimmable 120V 3000K 90 CRI 800 Lumens 40 Degree Spread 75W	438
74950	LED16PAR38/DIM/850/FL40/13Y/GL/WRP	386
14.5PLH/840/DIR	4 Pin LED PL Lamp 1,750 Lumen 14.5W 4000K Ballast Compatible 0-10V Dimming G24q/GX24q Base	440
9.5PLO/840/DIR	Omni Directional LED Lamp Electronic Ballasts 120-277V 4000K 1,200 Lumens	11
98248	17PLV/830/DIR 42W 1900L 120-277V 3000K	8
98249	42W 120-277V 1900L 3500K 82 CRI 112 Efficacy 120 degree beam angle Dimmable 50,000Hr Life	32
98253	15.5 PLH 3500K 1750 Lumens 120-277V	39
98257	16.5PLV/835/BYP 1850lm 16.5W 120-277V 3500K BYPASS G24d, GX24d, G24q & GX24q (2/4-pin CFL)	34
98399	8W 2700K 80CRI 870 Lumens 120-277V	24
9PLO/840/HYBM	Omni Directional LED Lamp Electronic Ballasts 120-277V 4000K 1,250 Lumens	3
HN-V-G24Q-B-11W-835-G4	Helen Lamp Vertical 4-pin CFL Socket 11W 3500K	27
L10V/841/BYP/LED	L10V/841/BYP/LED 120-277 4100K Lumens 1000 watts 26/32/42	50
1408992	10PUBGULED27 10W 800 Lmns 2700K Base GU24 Puck Lamp	6
LED-7318-35A	LED-7318-35A 12W 1157 Lmns 3500K Non Dimmable	100



Essential Lighting Solutions | Hot Sheet Stock Report | Updated 04-16-2026

TDK/TEG Retrofit Troffer Kit



Catalog Number	Description	Quantity Available
TDK1-1-14-UNVL-25-1-35	TDK Troffer Retrofit Kit 1x4 3230L 120 - 277V 25W 3500K	30
TDK1-1-14-UNVL-25-1-40	TDK Troffer Retrofit Kit 1x4 3390L 120 - 277V 25W 4000K	487
TDK1-1-14-UNVL-25-1-40 B	TDK Troffer Retrofit Kit 1x4 3390L 120 - 277V 25W 4000K BBU	7
TDK1-1-14-UNVL-25-1-50	TDK Troffer Retrofit Kit 1x4 3320L 120 - 277V 25W 5000K	45
TDK1-1-14-UNVL-30-1-30	TDK Troffer Retrofit Kit 1x4 3760L 120 - 277V 30W 3000K	25
TDK1-1-14-UNVL-30-1-40	TDK Troffer Retrofit Kit 1x4 3910L 120 - 277V 30W 4000K	353
TDK1-1-14-UNVL-30-1-50	TDK Troffer Retrofit Kit 1x4 3980L 120 - 277V 30W 5000K	277
TDK1-1-22-UNVL-21-1-40	TDK Troffer Retrofit Kit 2X2 2600L 120 - 277V 21W 4000K	14
TDK1-1-22-UNVL-29-3-T	TDK Troffer Retrofit Kit 2X2 3650L 120 - 277V 29W 2700 - 6500K BLU Drive Driver	54
TDK1-1-22-UNVL-30-1-30	TDK Troffer Retrofit Kit 2X2 3880L 120 - 277V 30W 3000K	5
TDK1-1-24-UNVL-25-1-40	TDK Troffer Retrofit Kit 2X4 3330L 120 - 277V 25W 4000K	1178
TDK1-1-24-UNVL-25-1-40 BAA	TDK Troffer Retrofit Kit 2X4 3330L 120 - 277V 25W 4000K BAA Compliant	680
TDK1-1-24-UNVL-25-1-50	TDK Troffer Retrofit Kit 2X4 3520L 120 - 277V 25W 5000K	465
TDK1-1-24-UNVL-29-3-T	TDK Troffer Retrofit Kit 2X4 3900L 120 - 277V 29W 2700 - 6500K BLU Drive Driver	812
TDK1-1-24-UNVL-30-1-30	TDK Troffer Retrofit Kit 2X4 3680L 120 - 277V 30W 3000K	162
TDK1-1-24-UNVL-30-1-35	TDK Troffer Retrofit Kit 2X4 3800L 120 - 277V 30W 3500K	143
TDK1-1-24-UNVL-30-1-50	TDK Troffer Retrofit Kit 2X4 3910L 120 - 277V 30W 5000K	205
TDK1-1-24-UNVL-30-1-50 B	TDK Troffer Retrofit Kit 2X4 3830L 120 - 277V 30W 5000K BBU	3
TDK2-1-24-UNVL-25-1-40	TDK Troffer Retrofit Kit 2X4 3330L 120 - 277V 25W 4000K	3655
TDK2-1-24-UNVL-40-1-50	TDK Troffer Retrofit Kit 2X4 5200L 120 - 277V 40W 5000K	307
TDK-SMK-1-14	TDK/TEG Surface Mount Kit 1x4	120
TDK-SMK-1-22	TDK/TEG Surface Mount Kit 2x2	168
TDK-SMK-1-24	TDK/TEG Surface Mount Kit 2x4	2361
TEG1-1-22-UNVL-25-1-50	TEG Troffer Retrofit Kit 2X2 3330L 120 - 277V 25W 5000K	17
TEG1-1-24-UNVL-25-1-40 BAA	TEG Troffer Retrofit Kit 2X4 3330L 120 - 277V 25W 4000K BLU Drive Driver	10
TEG1-1-24-UNVL-25-1-50	TEG Troffer Retrofit Kit 2X4 3520L 120 - 277V 25W 5000K	91
TEG1-1-24-UNVL-29-3-T	TEG Troffer Retrofit Kit 2X4 3900L 120 - 277V 29W 2700 - 6500K BLU Drive Driver	11
TEG1-1-24-UNVL-30-1-40	TEG Troffer Retrofit Kit 2X4 3830L 120 - 277V 30W 4000K	5
TEG1-1-24-UNVL-30-1-50	TEG Troffer Retrofit Kit 2X4 3910L 120 - 277V 30W 5000K	27
TEG1-1-22-UNVL-29-3-T	TEG Troffer New Construction 2x2 29W 3650 Lumens 2700-6500K 120-277V BLU DRiVe Dimmable 161,000 L70 DLC Premium 10-Year Warranty	8
TEG2-1-24-UNVL-25-1-40	TEG Troffer Retrofit Kit 2X4 3330L 120 - 277V 25W 4000K	8



Essential Lighting Solutions | Hot Sheet Stock Report | Updated 04-16-2026

L-Grid Edge Extreme Flat Panel



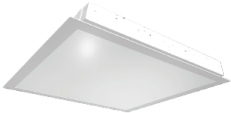
Catalog Number	Description	Quantity Available
FTR1-14-40-80-M-FTU-UNV2-1050	L-Grid Edge Extreme Recessed Flat Panel 1x4 4,500 L 41W 4000K Dimmable 200,000 Hrs Power Supply Included 10-Year Warranty	17
FTR2-14-UNVL-25-35-80	L-Grid Edge Extreme XL 1x4 Flat Panel 3385lm 25W 120-277V 3500K Dimming	95
FTR2-14-UNVL-25-40-80	L-Grid Edge Extreme XL 1x4 Flat Panel 3385lm 25W 120-277V 4000K Dimming	23
FTR2-14-UNVL-35-50-80	L-Grid Edge Extreme XL 1x4 Flat Panel 4345lm 35W 120-277V 5000K Dimming	16
FTR2-22-UNVL-40-35-80	L-Grid Edge Extreme XL 2x2 Flat Panel 4990lm 40W 120-277V 3500K Dimming	8
FTR2-22-UNVL-40-40-80	L-Grid Edge Extreme XL 2x2 Flat Panel 4990lm 40W 120-277V 4000K Dimming	12
FTR3-14-UNVL-26-SCCT	L-Grid Edge Extreme XL Select 1x4 Backlit Flat Panel 3561 - 5080L 120 - 277V 26 - 40W 3000 - 5000K	38
FTR3-24-UNVL-32-SCCT	L-Grid Edge Extreme XL Select 2X4 Backlit Flat Panel 4609 - 6957L 120 - 277V 31 - 48W 3000 - 5000K	3
FTR3-24-UNVL-32-SCCT BBU	L-Grid Edge Extreme XL Select 2X4 Backlit Flat Panel 4609 - 6957L 120 - 277V 31 - 48W 3000 - 5000K BBU	3

L-Grid3 Recessed Troffer



Catalog Number	Description	Quantity Available
GTR3-22-35-80-F-A-H-N	L-Grid3 New Build 2x2 5,100 L 51 W 120-277V 3500K Dimmable Flat Diffuser 200,000 Hrs DLC Listed NSF Listed 10-Year Warranty	8
GTR3-22-35-80-V-A-H-B	L-Grid3 New Build 2x2 5,100 L 51 W 120-277V 3500K Dimmable Volumetric Diffuser Battery Back-Up Included 200,000 Hrs DLC Listed NSF Listed 10-Year W	2
GTR3-22-40-80-F-A-H-N	L-Grid3 New Build 2x2 5,400 L 51 W 120-277V 4000K Dimmable Flat Diffuser 200,000 HRs DLC Listed NSF Listed 10-Year Warranty	2
GTR3-22-40-80-V-A-H-N	L-Grid3 New Build 2x2 5,400 L 51 W 120-277V 4000K Dimmable Volumetric Diffuser 200,000 Hrs DLC Listed NSF Listed 10-Year Warranty	15
GTR3-22-40-80-V-A-S-B	L-Grid3 New Build 2x2 3,800 L 33 W 120-277V 4000K Dimmable Volumetric Diffuser Battery Back-Up Included 200,000 Hrs DLC Listed NSF Listed 10-Year W	4
GTR3-22-40-80-V-A-S-N	L-Grid3 New Build 2x2 3,800 L 33 W 120-277V 4000K Dimmable Volumetric Diffuser 200,000 Hrs DLC Listed NSF Listed 10-Year Warranty	3

L-Grid2EH Recessed Troffer



Catalog Number	Description	Quantity Available
GTR2-22EH-50-80-UNV2-S-A-F	L-Grid2EH 2x2 Flat Panel LED Troffer 5010L 120 - 277V 42W 5000K Standard FL Air Return	149

Essential Lighting Solutions | Hot Sheet Stock Report | Updated 04-16-2026

Can Lights



Catalog Number	Description	Quantity Available
LTR2-1-UNV-35-12-5S-C-WH	L-Trim Sol 5" LED Square Can 3500K 12.3W 1260 Lumens 0-10V Dimming White New Build	39
LTR2-1-UNV-40-15-6R-C-WH	L-Trim Sol 6" LED Round Can 4000K 15.5W 1510 Lumens 0-10V Dimming White New Build	3
LTR3-1-UNV-40-18-6R-C-WH	L-TrimSol XL New Construction and Retrofit Applications 6" Round Can Light 1710lm 18.3W 120-277VAC 4000K Dimmable 5-Year Warranty	3
LTR3-1-UNV-50-37-10R-C-WH	L-TrimSol XL New Construction and Retrofit Applications 10" Round Can Light 3800lm 39.2W 120-277VAC 5000K Dimmable 5-Year Warranty	69
CLR62SWRVS9WH	6" LED Recessed Downlight Suitable for New Construction or Retrofit Applications 1,500 Lumens 16.4 Watts 4000K 120-347V	12
CLR8-10-UNV-50K-WH	8" LED Recessed Downlight Suitable for New Construction or Retrofit Applications 2,550 Lumens 25.7 Watts 120-277V	3
DCR4-106-120-5K-WH	4" LED Recessed Downlight Suitable for Retrofit 694 Lumens 8.4 Watts 120V 5000K White Finish	353
DCR56-112-120-5K-WH	6" LED Recessed Downlight Suitable for Retrofit Applications 1,291 Lumens 14.5 Watts 120V (Housing Required part#LT-6-HOU)	179
DLR56-3012-120-4K-WH	DLR56 1230 Lmns 120V 18w 4000K White	40
DLR56-3012-120-5K-WH	5" & 6" Recessed LED Downlight - 1200 Lumen(housing not included part# LT-6-HOU)	8
E4SF-XA3060DN	Flanged 4" Square Downlight - 1856lm 25W 3000K 120V 95 CRI 60 degree beam Non IC Airtight	65
E4SFB-LS	4" Square Downlight Trim - Flanged Bevel Lensed Satin Nickel	60
INFT6/850DIM010UNV	6" LED Can Light Adjustable Lumen at 6W, 9W and 13W at 130 LPW 5000K 120-277V 0-10V Dim Retrofit or New Construction Wet Location 5-Year Warranty	48
INFT8/835/DIM010UNV	8" LED Can Light Adjustable Wattage 1045/1475/2090 Lumen 8/12/17W 120-277V 3500K 0-10V Dim Retrofit or New Construction Wet Location 5-Year Warranty	280
INFT9.5/840/DIM010UNV	9.5" LED Can Light Adjustable Lumen at 2,100 / 2,600 / 3,500 lumens CRI 80 4000K 120-277V, 0-10V Retrofit or New Construction Wet Location 5-Year Warranty	46
LEDRT56/R3C/900UD/9SC8	5/6" Round Generation 3C Can Light 12 W 900 L 120-277V 0-10V Dimming 75 Lumens per Watt Selectable CCT 3000K-5000K Energy Star Listed	200

PAR 30



Catalog Number	Description	Quantity Available
PAR30-1-D40-11-40	US LED Par 30 Bulb: 1,070 Lumen 4000K 10.8W 120V 40 Degree Beam Angle Black	1996

Decorative Pendants



Catalog Number	Description	Quantity Available
RFCP-1-UNVL-WH	LED Round Pendant 120-277V 5' Cord E26 Base A19 Bulb (not included) White Fabric	314
USCP-1-UNVL-SL BK	LED Cone Pendant 120-277V E26 Base A19 Bulb (not included) Silver Finish Black Cord	209
USDS-1-UNVL-A	LED Dome Sphere Pendant 120-277V E26 Base 5W G9 Lamps (not included) Anodized Aluminum	285
57856	A19 E26 Bulb 8.5W 120V 800 Lumen 2700K Dimmable	103
8.5A19DIM830	8.5W A19 3000K Dimmable 60W Equivalent	36
G9/LED/4W/CL/120V/50K	LED G9 Light Bulb 500 lumens 60W 120V 5000K Super White Clear Finish	260

Essential Lighting Solutions | Hot Sheet Stock Report | Updated 04-16-2026

SGM1



Catalog Number	Description	Quantity Available
PSH1-1-P-I-W-4	SGM Indoor Driver Box White Plastic Cover 100W	40
SGM1-1-40-90-60	SGM Linear Strip Fixture 5' 1,100 L 12W 120-277V 4000K 7-Year Warranty *No Driver Included PSH1-1-P-I-W-4*	101

LMU1



Catalog Number	Description	Quantity Available
LMU1-1-12-36-40-80-Y6	LMU Undershef Task Light 3' 1,350 L 13W 120V 4000K 80 CRI Integrated Occupancy Sensor 6 Minute Delay Power Source Not Included 7-Year Warranty	5344
PWW-1-24-20	Wall Mount AC Adapters Wall Plug-In Power Supply, Switch Mode, Fixed Blade, 100-240VAC Input, 24V Output, 0.50A, Positive, Level VI	1000

TCK Troffer Conversion Kit



Catalog Number	Description	Quantity Available
TCK1-1-2-UNVL-18-2-40	TCK Troffer Conversion Kit 2x2 2,360 L 18.5W 120-277V 4000K Dimmable 161,000 Hrs Diffused Lens Included 7-Year Warranty	476
TCK1-1-2-UNVL-25-2-40	TCK Troffer Conversion Kit 2x2 3,100 L 25.2W 120-277V 4000K Dimmable 161,000 Hrs Diffused Lens Included 7-Year Warranty	420
TCK1-1-4-UNVL-30-2-40	TCK Troffer Conversion Kit 2x4 3,830 L 30W 120-277V 4000K Dimmable 161,000 Hrs Diffused Lens Included 7-Year Warranty	16

PJF1 PJF2 Linear Strip



Catalog Number	Description	Quantity Available
PJF1-1-2-1-17-ID-40-D	PJF1 2' Strip Fixture Surface and Suspended 2340lm 16.7W 120-277VAC 4000K White Dimmable 10-Year Warranty	129
PJF1-1-2-X-17-ID-50-O	PJF1 2' Strip Fixture 2450 Lumens 16.5 Watt 120 Volt 5000K White	46
PJF1-1-4-1-25-ID-35-D	PJF1 4' Strip Fixture 3570 Lumens 25.3 Watt 120-277 Volt 3500K White Dimmable	6
PJF1-1-4-1-25-ID-40-D	PJF1 4' Strip Fixture Surface and Suspended 3600lm 25.3W 120-277VAC 4000K White Dimmable 10-Year Warranty	6
PJF1-1-4-1-25-ID-40-D 1	PJF1 4' Strip Fixture Surface and Suspended 3600lm 25.3W 120-277VAC 4000K White Dimmable With Sensor 10-Year Warranty	150
PJF1-1-4-1-25-ID-40-D 1 B	PJF1 4' Strip Fixture Surface and Suspended 3600lm 25.3W 120-277VAC 4000K White Dimmable With Integrated Battery Back Up Sensor 10-Year Warranty	50
PJF1-1-4-1-25-ID-40-D HL	PJF1 4' Strip Fixture Surface and Suspended 3600lm 27W 120-277VAC 4000K White Dimmable 10-Year Warranty	180
PJF1-1-4-1-25-ID-50-D	PJF1 4' Strip Fixture Surface and Suspended 3660lm 25.3W 120-277VAC 5000K White Dimmable 10-Year Warranty	2
PJF1-1-4-1-30-B-T-D B	PJF1 4' Strip Fixture Surface and Suspended 4000lm 30W 120-277VAC 2700-6500K White Dimmable Smart Blu Integrated BBU 10-Year Warranty	6
PJF1-1-4-1-30-B-T-D B	PJF1 4' Strip Fixture Surface and Suspended 4000lm 30W 120-277VAC 2700-6500K White Dimmable Smart Blu Integrated BBU 10-Year Warranty	6
PJF1-1-4-1-35-ID-40-D	PJF1 4' Strip Fixture Surface and Suspended 4860lm 34.7W 120-277VAC 4000K White Dimmable 10-Year Warranty	78
PJF1-1-4-1-35-ID-50-D 1 B	PJF1 4' Strip Fixture 4860 Lumens 34.7 Watt 120-277V 5000K White With Integrated Battery Back Up With Sensor	4
PJF1-1-4-1-35-ID-50-D DH	PJF1 4' Strip Fixture Surface and Suspended 4860lm 34.7W 120-277VAC 5000K White Occupancy Sensor with Daylight Harvesting 10-Year Warranty	2
PJF1-1-4-X-35-ID-40-O	PJF1 4' Strip Fixture 4860 Lumens 34.7 Watt 120 Volt 4000K White	3
PJF1-1-8-1-60-B-T	PJF1 8' Strip Fixture 8680 Lumens 60 Watt 120-277 Volt 2700-6500K White Dimmable Blu-Drive	8
PJF1-1-8-1-60-ID-50-D	PJF1 8' Strip Fixture Surface and Suspended 8680lm 60W 120-277VAC 5000K White Dimmable 10-Year Warranty	12



Essential Lighting Solutions | Hot Sheet Stock Report | Updated 04-16-2026

Signage Solutions

LinearStar LED Sign Lighting



Catalog Number	Description	Quantity Available
SKT1-1-24-BK-1-30-90-L	1' Linear Star Sub Assembly Kit Left Unit 2.4W 190 Lumens 3000K 90 CRI Black	5
SKT1-1-24-BK-1-30-90-R	1' Linear Star Sub Assembly Kit Right Unit 2.4W 190 Lumens 3000K 90 CRI Black	5
SKT1-1-24-BK-4-30-90-C	4' Linear Star Sub Assembly Kit Center Unit 9.6W 760 Lumens 3000K 90 CRI Black	2
SMT1-2-BK-22	Linear Star Mounting Kit 22 Degree Angle Black For 4' to 6' Monument Sign Height	1391

PDX Modules



Catalog Number	Description	Quantity Available
PDX1-2-12-B	PDX Module Blue 8.5 Lumens 1.15 Watt High Flux 2 Modules per Foot	3194
PDX1-2-12-G	PDX Module Green 27.5 Lumens 0.36 Watt High Flux 2 Modules per Foot	5280
PDX1-2-12-O	PDX Module Orange 30 Lumens 1.45 Watt High Flux 2 Modules per Foot	400
PDX1-2-12-50	PDX Module 85L 12V 1W 5000K High Flux 2 Modules per ft	472
PDX1-2-12-65	PDX Module 90L 12V 1W 6500K High Flux 2 Modules per ft	277

Point XL & XLP



Catalog Number	Description	Quantity Available
PXL-2-12-W40	Point XL Module 100 Lumen 1W 12V 4000K 1.5 Modules Per Foot	1462
PXL-2-12-W50	Point XL Module 100 Lumen 1W 12V 5000K 1.5 Modules Per Foot	1340
PXLP-2-12-W50	Point XLP Module Channel Letter Lighting 100L 12V 1W 5000K 1.5 Modules per ft	3420



Essential Lighting Solutions | Hot Sheet Stock Report | Updated 04-16-2026

Saver XL



Catalog Number	Description	Quantity Available
SXL-1-12-W40	Saver XL Module Channel Letter Lighting 50L 12V 1W 4000K 2 Modules per ft	952
SXL-1-12-W50	Saver XL Module Channel Letter Lighting 50L 12V 1W 5000K 2 Modules per ft	9176
SXL-1-12-G	Saver XL Module Channel Letter Lighting 12V 1W 2 Modules per ft Green	1500
SXL-1-12-O	Saver XL Module Channel Letter Lighting 12V 1W 2 Modules per ft Orange	1270
SXL-1-12-R	Saver XL Module Channel Letter Lighting 12V 1W 2 Modules per ft Red	1115

TX1 Custom and Tube Length Kits



Catalog Number	Description	Quantity Available
TX1-6-24-D-8-48-65	TDX Sign Cabinet Lighting Retrofit Kit 4' 6500K 8 Modules Double Sided	13
TX1-6-24-D-8-60-50	TDX Sign Cabinet Lighting Retrofit Kit 57.91" 5000K 8 Modules Double Sided	6
TX1-6-24-D-8-72-50	TDX Sign Cabinet Lighting Retrofit Kit 69.91" 5000K 8 Modules Double Sided	2
TX1-6-24-S-2-30-65	TDX Sign Cabinet Lighting Retrofit Kit 27.91" 6500K 2 Modules Single Sided	5
TX1-6-24-S-4-48-65	f	17
TX1-6-24-S-4-72-50	TDX Sign Cabinet Lighting Retrofit Kit 69.91" 5000K 4 Modules Single Sided	12
TX1-6-24-S-5-84-50	TDX Sign Cabinet Lighting Retrofit Kit 81.91" 5000K 5 Modules Single Sided	8
TX1-6-24-S-6-96-50	TDX Sign Cabinet Lighting Retrofit Kit 93.91" 5000K 6 Modules Single Sided	8
TX1L-1-24-D-3-42-W	TX1L Sign Cabinet Lighting Retrofit Kit 42" 2400L 24V 6500K 3 Modules Double Sided	12
TX1L-1-24-D-4-60-W	TX1L Sign Cabinet Lighting Retrofit Kit 60" 3200L 24V 6500K 4 Modules Double Sided	10
TX1L-1-24-D-5-72-W	TX1L Sign Cabinet Lighting Retrofit Kit 72" 4000L 24V 6500K 5 Modules Double Sided	48
TX1L-1-24-D-6-84-W	TX1L Sign Cabinet Lighting Retrofit Kit 84" 4800L 24V 6500K 6 Modules Double Sided	5
TX1L-1-24-D-6-96-W	TX1L Sign Cabinet Lighting Retrofit Kit 96" 4800L 24V 6500K 6 Modules Double Sided	40
TX1L-1-24-S-4-48-W	TX1L Sign Cabinet Lighting Retrofit Kit 48" 1600L 24V 6500K 4 Modules Single Sided	9
TX1L-4-24-D-4-48-W	TX1L Sign Cabinet Lighting Retrofit Kit 48" 24V 6500K 4 Modules Double Sided	4
TX1L-4-24-D-4-48-W50	TX1L Sign Cabinet Lighting Retrofit Kit 48" 24V 5000K 4 Modules Double Sided	47
TX1L-4-24-S-4-48-W	TX1L Sign Cabinet Lighting Retrofit Kit 48" 24V 6500K 4 Modules Double Sided	3